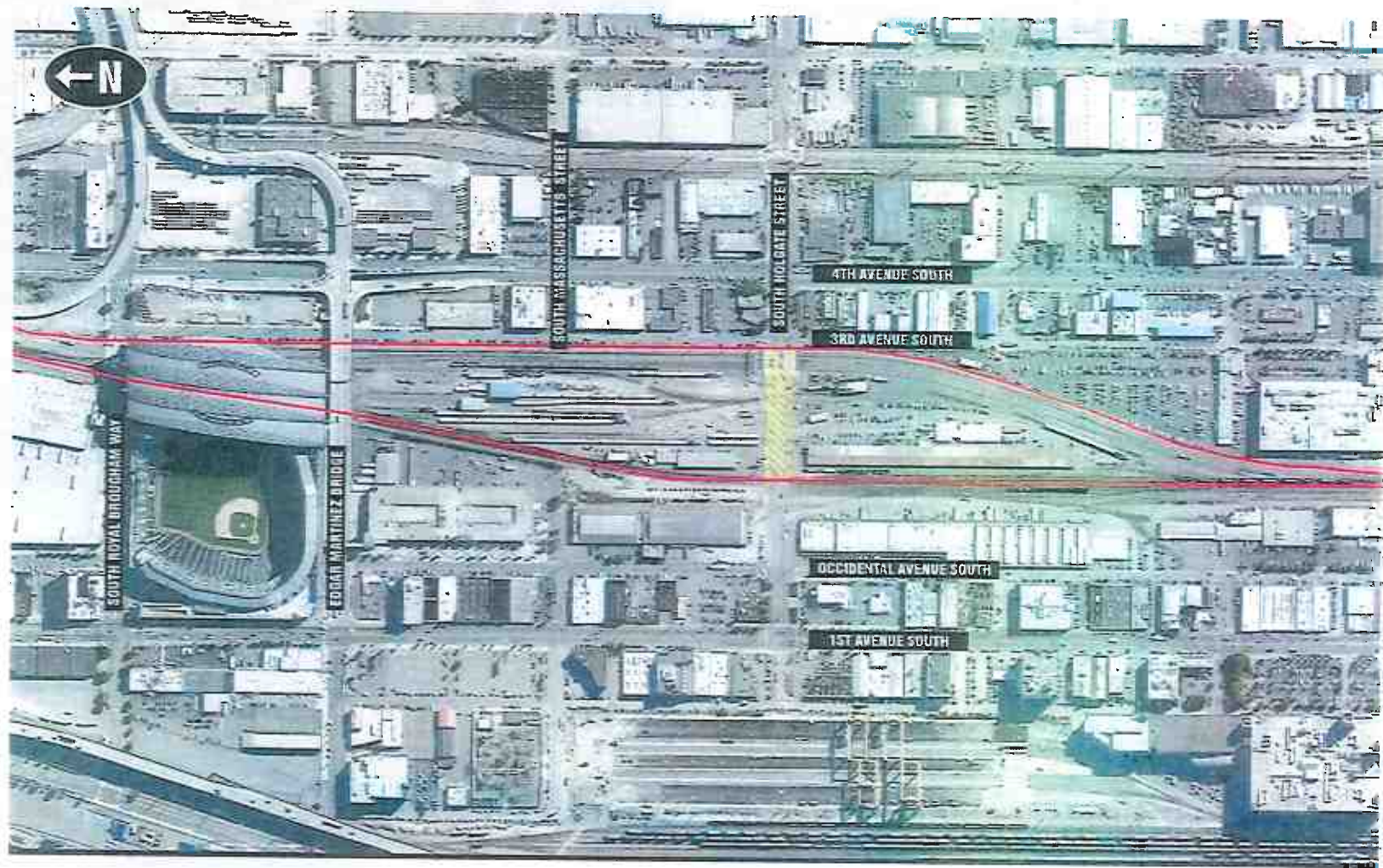


Amtrak: Seattle Facility



Amtrak: Seattle Facility



Amtrak in Seattle and Washington State

- Employment
 - At the end of FY2014, employed 523 Washington residents.
 - Over 300 employees at the S.Holgate facility that operates 24/7, 365 days/yr
- Operations
 - Support two (2) national long distance trains
 - State-Supported Amtrak Cascades
 - Maintenance for Sounder trains
- Major Facilities
 - Seattle Amtrak Facility. Amtrak invested \$42 million in the first 2 phases of a comprehensive facility to address operational needs
 - Amtrak currently in a \$2 million design process for Phases 3 & 4
 - Phases 3 & 4 will result in an additional \$50+ million investment by Amtrak

Amtrak: Safety Issues - Seattle Facility/S. Holgate Street

Safety gates closing

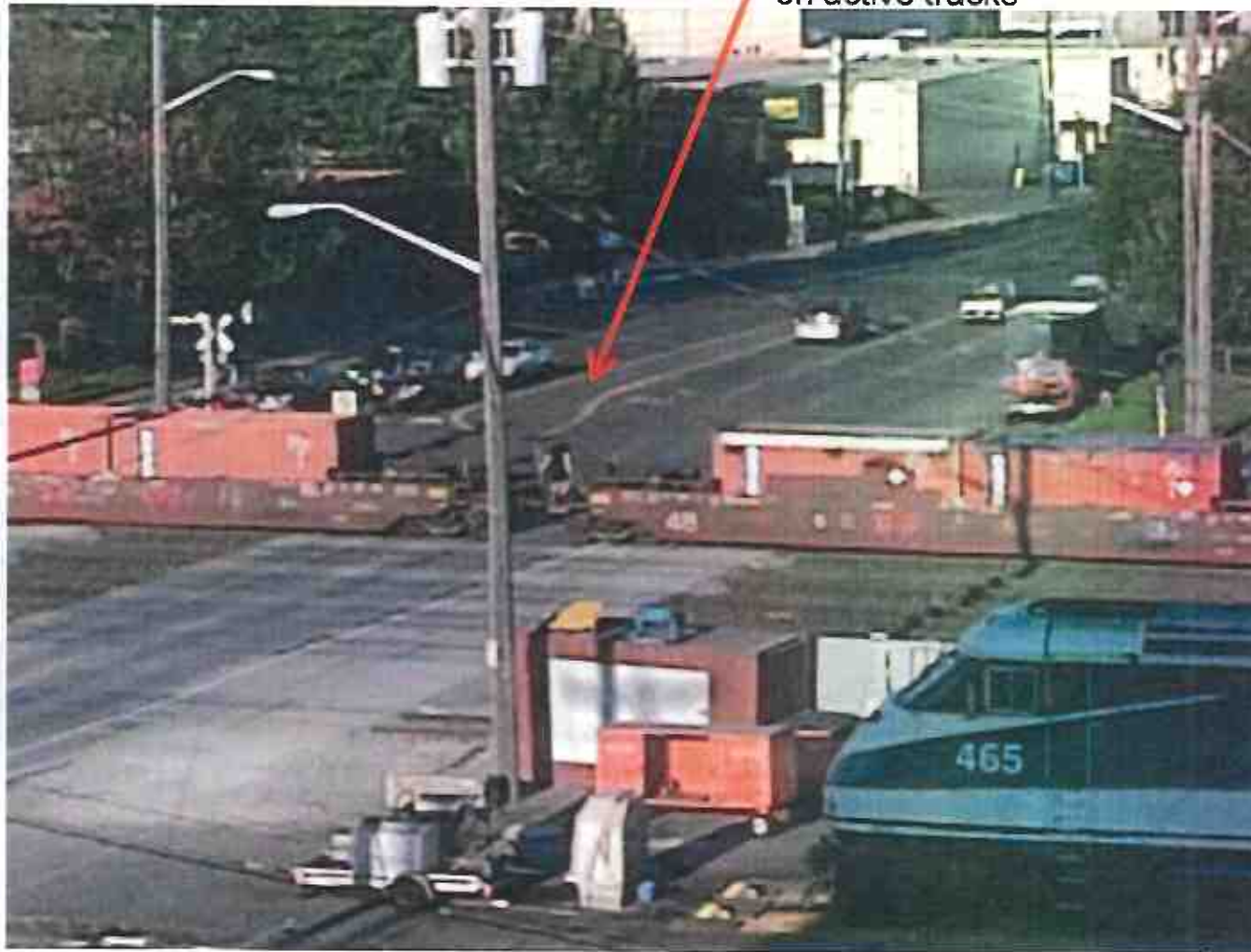


Safety gates close on top of SUV, traffic trapped on tracks due to congestion



Amtrak: Safety Issues - Seattle Facility/S. Holgate Street

Individual climbing through/over train
on active tracks



Safety, Congestion, and Traffic in SODO: 21 AUG 2014 -11:35 AM

BNSF Freight completed move

Amtrak Cascades Train 513: Vancouver BC to Portland, OR



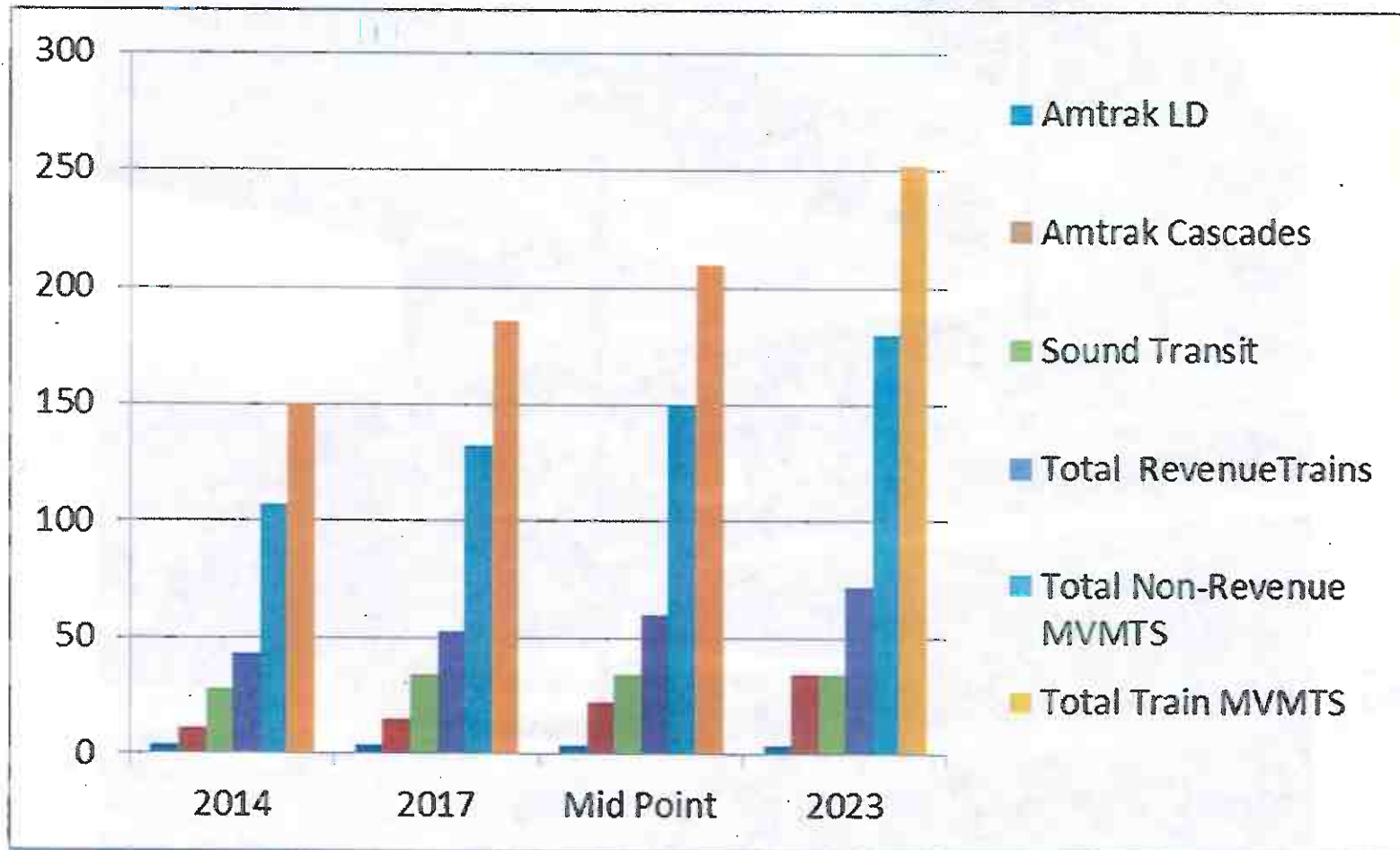
Truck 1

Truck 2

Amtrak switch engine pulling Sound Transit loco for maintenance

Current and Projected Passenger Trains

Daily All Trains Crossing S. Holgate
Amtrak Seattle Facility – S. Holgate



Current and Projected Passenger Trains - Impact to Mobility

Estimated Daily Road Closure (in Hours) at S. Holgate Due to all Passenger Related Train Movements

